



Science in Focus: IPBES Assessments Underway & Opportunities for Engagement (Side Event #4318) –

Business and biodiversity

www.ipbes.net



Food and Agriculture
Organization of the
United Nations



Approval and launch of the assessment

- The IPBES Plenary, in decision IPBES-7/1, adopted the rolling work programme of IPBES up to 2030, which includes under its first objective a methodological assessment of the impact and dependence of business on biodiversity and nature's contributions to people ("**business and biodiversity assessment**")
- Undertaking of the assessment was approved at IPBES-9/1.

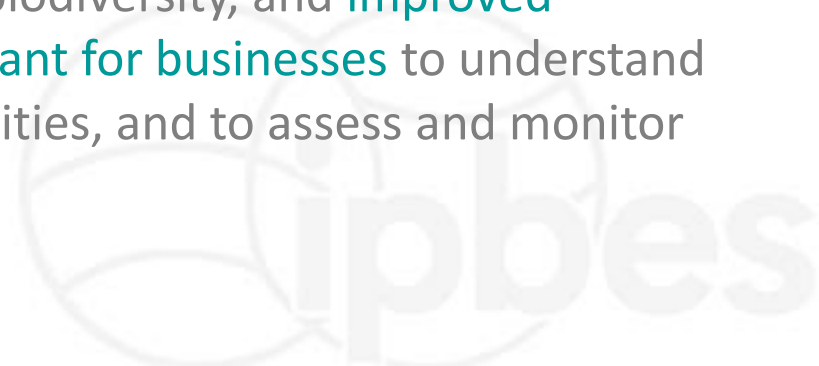


Scope of the assessment

- This methodological assessment will strengthen the knowledge base to **support efforts by business** to achieve the 2050 Vision for Biodiversity and the objectives of the Convention on Biological Diversity...
 - conservation of biological diversity,
 - the sustainable use of its components, and
 - the fair and equitable sharing of the benefits arising out of the utilization of genetic resources.
- This assessment will categorize the **dependencies** and **impacts** of **business and financial institutions** on **biodiversity and nature's contributions to people**, which incorporates ecosystem services and other analogous concepts, including in relation to indigenous peoples and local communities.

Rationale of assessment

- Businesses depend on and benefit from biodiversity and nature's contributions to people in various ways and to varying extents and have a range of positive and negative impacts on both biodiversity and nature's contributions to people.
- Improved understanding and awareness of dependencies and impacts of businesses, throughout value chains, on biodiversity, and improved approaches for measurement, are important for businesses to understand the variety of relevant risks and opportunities, and to assess and monitor performance.



Chapter outline

- Chapter 1: Setting the scene.
- Chapter 2: How does business depend on biodiversity?
- Chapter 3: How does business impact biodiversity?
- Chapter 4: Approaches for measurement of business dependencies and impacts on biodiversity.
- Chapter 5: Businesses as key actors of change: options for action by business.
- Chapter 6: Creating an enabling environment for business: options for actions by Governments, the financial sector and civil society?

Expertise highlighted in scoping report

- The expert team will draw from a *diversity of backgrounds*, and a *diversity of disciplines*.
- The interdisciplinary team will draw from a *diversity of knowledge sources*.

Backgrounds:

- Academic
- Business and industry
- Government
- civil society

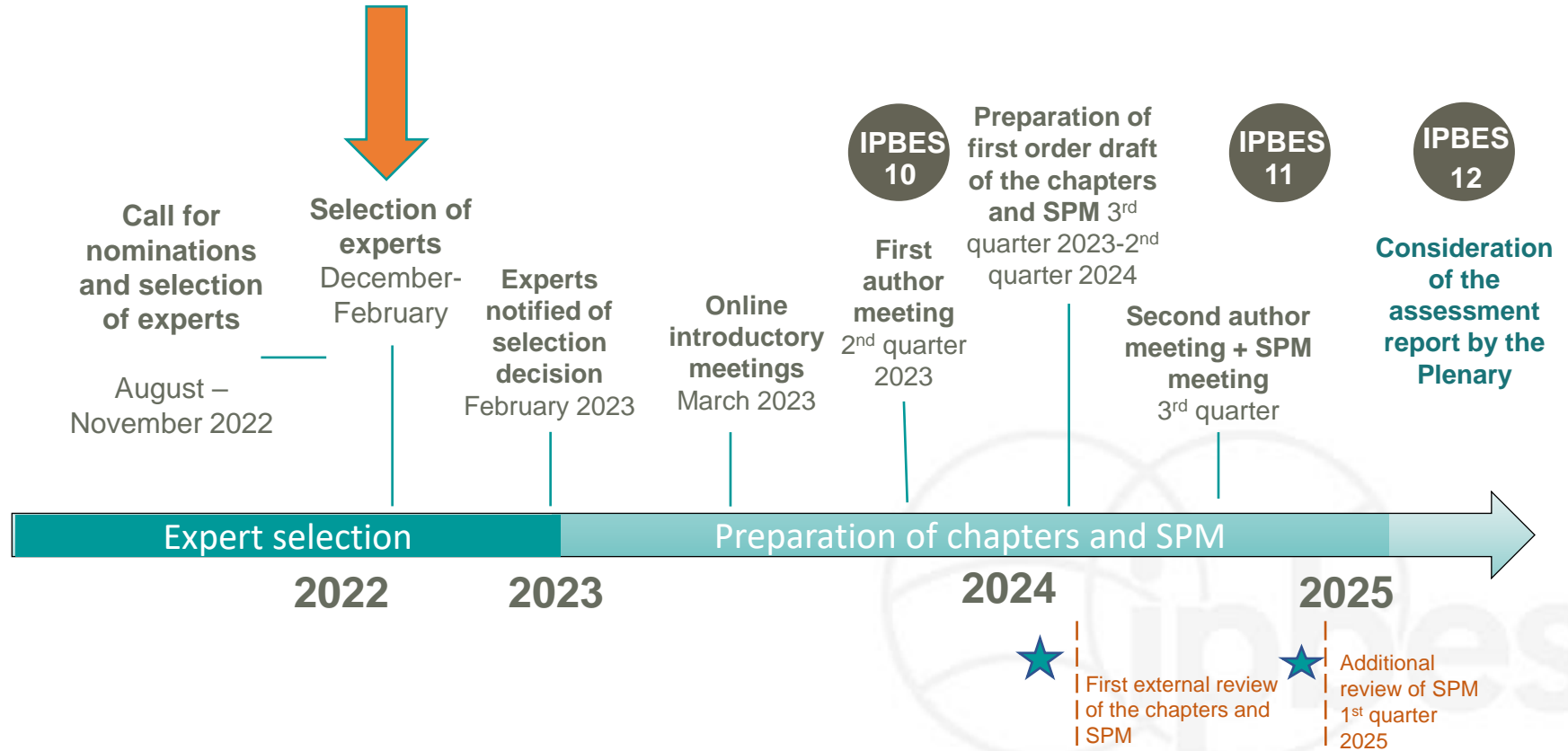
Disciplines:

- Accounting
- Climatology, ecology, hydrology
- Economics, finance
- Gender studies
- Law
- Public health, risk assessment
- Trade
- Management science
- Material design and engineering

Knowledge sources:

- Business and finance knowledge
- Governmental policy and regulatory knowledge
- Indigenous and local knowledge
- Natural and social science

Next steps and ways to engage





Thank you!

¡Gracias!

Merci !



IPBES Secretariat, UN Campus
Platz der Vereinten Nationen 1, D-53113 Bonn, Germany
secretariat@ipbes.net

    
www.ipbes.net

How to engage?



- **Call for expert nominations**
 - Nominate experts
 - Apply to serve as an expert given your background and expertise fit the call for nominations



- **External review periods**
 - Register to be a reviewer
 - Submit comments on the chapters and SPM, when available for review



- **Informal dialogues with stakeholders**
 - Receive update on assessment progress
 - Discuss key points and questions with experts of the assessment



- **Stakeholder days prior to each Plenary**
 - Overview of the assessment



- **Following approval of assessments at Plenary**
 - Use and help disseminate key findings and outcomes of the assessment

Opportunities to engage – current assessments

Invasive alien species assessment

*Summary of policymakers – **final review by Governments prior to IPBES-10**

Transformative change assessment

*First external review of the chapters - **03 Feb 2023 - 17 Mar 2023**

*Dialogues with stakeholders - **TBC**

Nexus assessment

*First external review of the chapters - **09 Jan 2023 - 19 Feb 2023**

*Dialogues with stakeholders – **9 February**